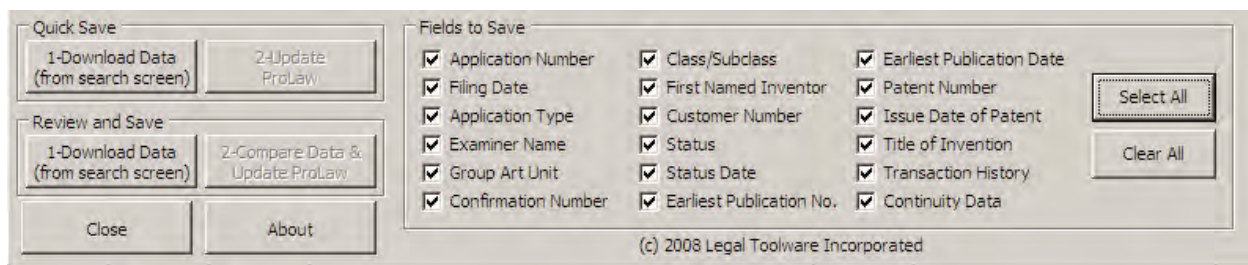


What the PAIR Tool Does:

Our PAIR tool looks at the patent application, publication or patent number entered in ProLaw and then goes to the Private PAIR website, authenticates the user, finds the appropriate record and downloads the PTO's current information for critical fields. A list of the fields that will be downloaded into ProLaw show at the bottom of the screen. Select or deselect any of the fields listed. By default, all fields listed are downloaded.

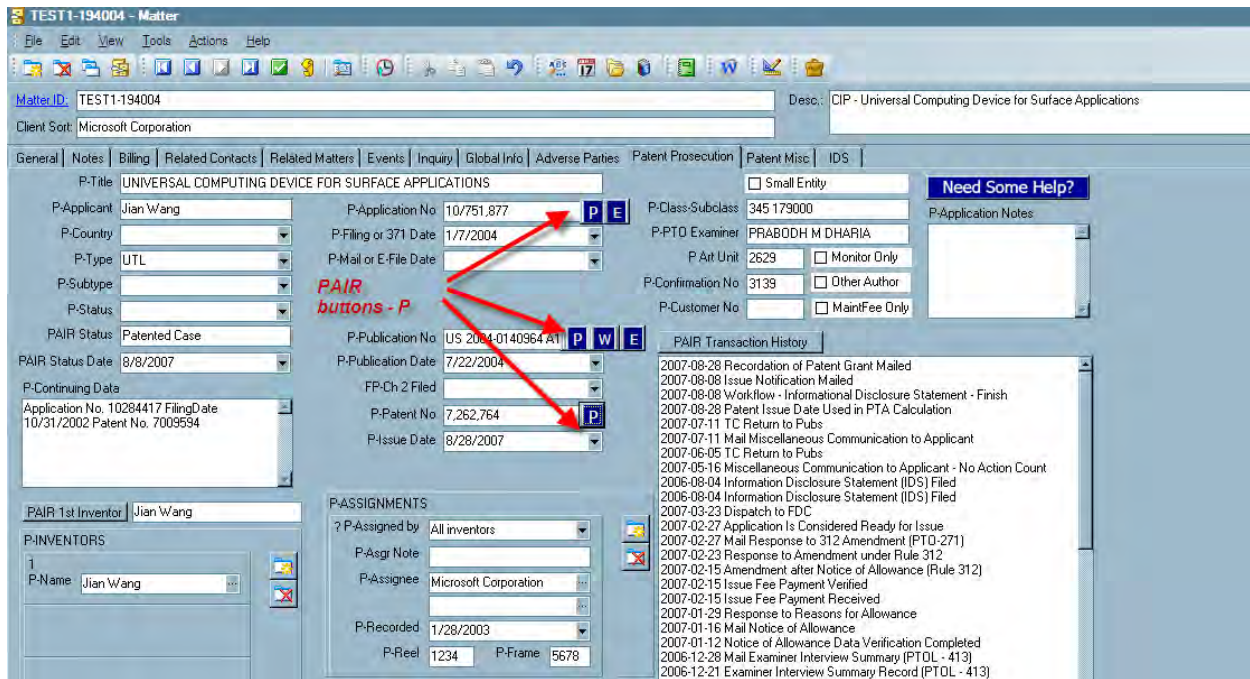


Steps to Download PAIR Data:

1. Open Matter to Patent Prosecution Screen

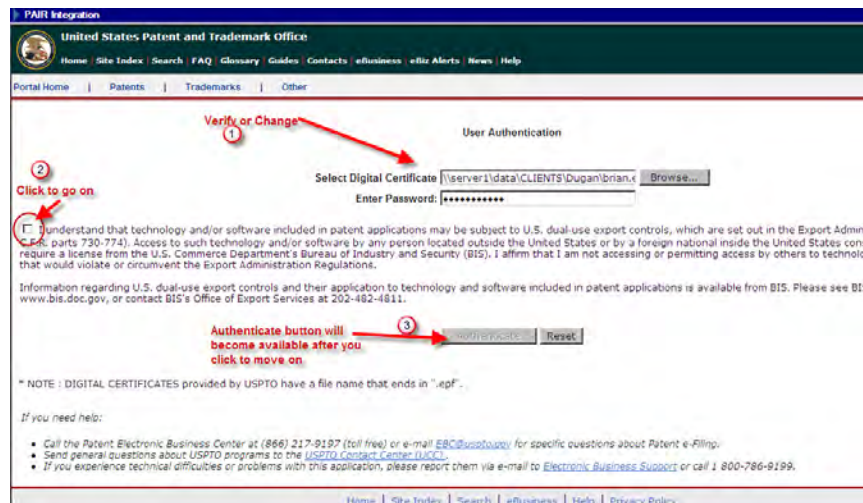
Open any U.S. Patent Prosecution matter to the custom tab containing the patent prosecution data, and enter the application, publication or patent number in the appropriate field if not there already. (See example, partly factual, in the following screen shot. Your custom tab may look different.)

Fields used to start the PAIR tool have a Blue P to the right as shown below. Click the P next to the application, publication or patent number field to start the program.



2. Authenticate

The first stop will be the PAIR authentication screen, where the information about the epf file name and location as well as the password will appear. Click the checkbox next to the first paragraph of text (2) and the Authenticate button (3) will light up. Click Authenticate.



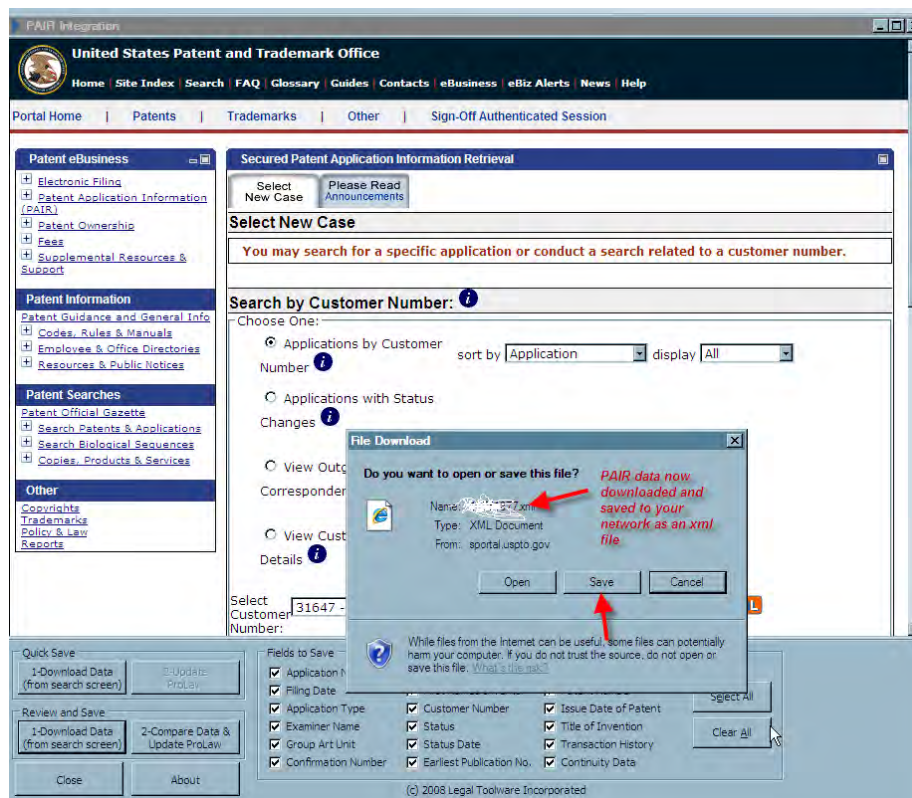
3. Choose Method to Save Data

There are two options for downloading:

1. Quick Save - which finds the current application, starts to download the data file and asks for confirmation of location for the file, and then allows you to merge the data into ProLaw without reviewing it.
2. Save after Reviewing Data – which does all of the same steps but gives you the option to see the data already in ProLaw in a number of the fields that will be downloaded.

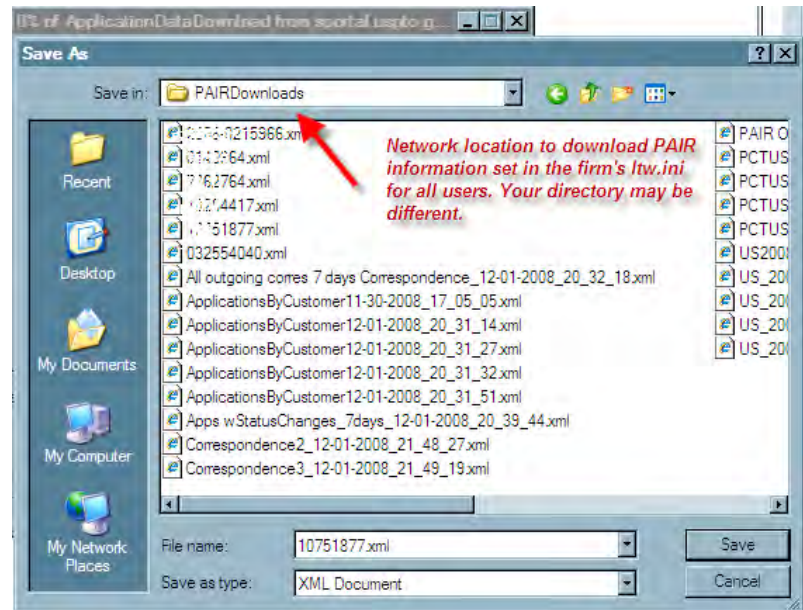
Option 1 – Quick Save.

This option searches for the application, publication or patent number selected for the current matter and begins to download an xml file which contains all of the data that will be merged into ProLaw. The file name consists of the number used followed by a period and the extension xml. (example: App 10/999,999 would be saved as 10999999.xml)



1. Save the xml File

Click the save button. This will bring up another window showing the directory where the xml file is to be stored. If this location does not match the location listed above, browse to the correct location (or the data will not be merged into ProLaw).

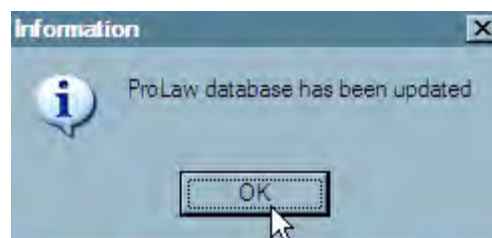


2. Merge Data Into ProLaw

Once you download the file, you will be returned to the PAIR site and the Update ProLaw button next to the Quick Save button will be highlighted. Click this button to merge the data. Note, in this version of the PAIR tool, application, publication and patent numbers will be formatted correctly and downloaded in the correct format if you choose to overwrite the existing data.

3. Confirmation Message

When you click the Update ProLaw button, the data is merged into your ProLaw matter. This includes the Transaction History data. You will know this because the confirmation message will appear:



Confirmation Message

4. Refresh ProLaw Data

When you return to your ProLaw screen, click both the save and refresh button to see the updated data.

Option 2 – Save File and Review Data Before Merging

The second option allows you to compare the data in ProLaw with that in the PTO database. The steps are the same as in Option 1 except that the second button will show a review screen prior to merging the data.

In the following example, The field names in red show fields that do not match.

The screenshot displays the 'Current and New Data' window within the PAIR Integration tool. A table compares 'Current Value' and 'New Value' for various patent fields. Red text and arrows highlight mismatches in field names:

- Application Number:** Current Value is 10,711,877; New Value is 10,711,877.
- Filing Date:** Both are 01/07/2004.
- Application Type:** Both are UTI.
- Examiner Name:** Both are PRABODH M DEWATA.
- Confirmation Number:** Both are 3139.
- Customer Number:** Both are 3139.
- Earliest Publication No.:** Current Value is 7,113,764; New Value is US 2004/010894 A1. (Field name in red)
- Earliest Publication Date:** Both are 07/22/2004.
- Patent Number:** Current Value is 7,113,764; New Value is 7,113,764. (Field name in red)
- Issue Date of Patent:** Both are 08/28/2007.
- Title of Invention:** Both are UNIVERSAL COMPUTING DEVICE FOR

At the bottom of the window, there are buttons for 'Update ProLaw' and 'Cancel'. Below the main window, there is a 'Quick Save' section with buttons for '1-Download Data (from search screen)', '2-Update ProLaw', 'Review and Save', '1-Download Data (from search screen)', and '2-Compare Data & Update ProLaw'. A 'Fields to Save' section contains a list of fields with checkboxes, including Application Number, Filing Date, Application Type, Examiner Name, Group Art Unit, Confirmation Number, Class/Subclass, First Named Inventor, Customer Number, Status, Status Date, Earliest Publication No., Class/Subclass, First Named Inventor, Customer Number, Status, Status Date, Earliest Publication Date, Patent Number, Issue Date of Patent, Title of Invention, Transaction History, and Continuity Data. There are 'Select All' and 'Clear All' buttons for this section.